


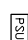


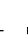

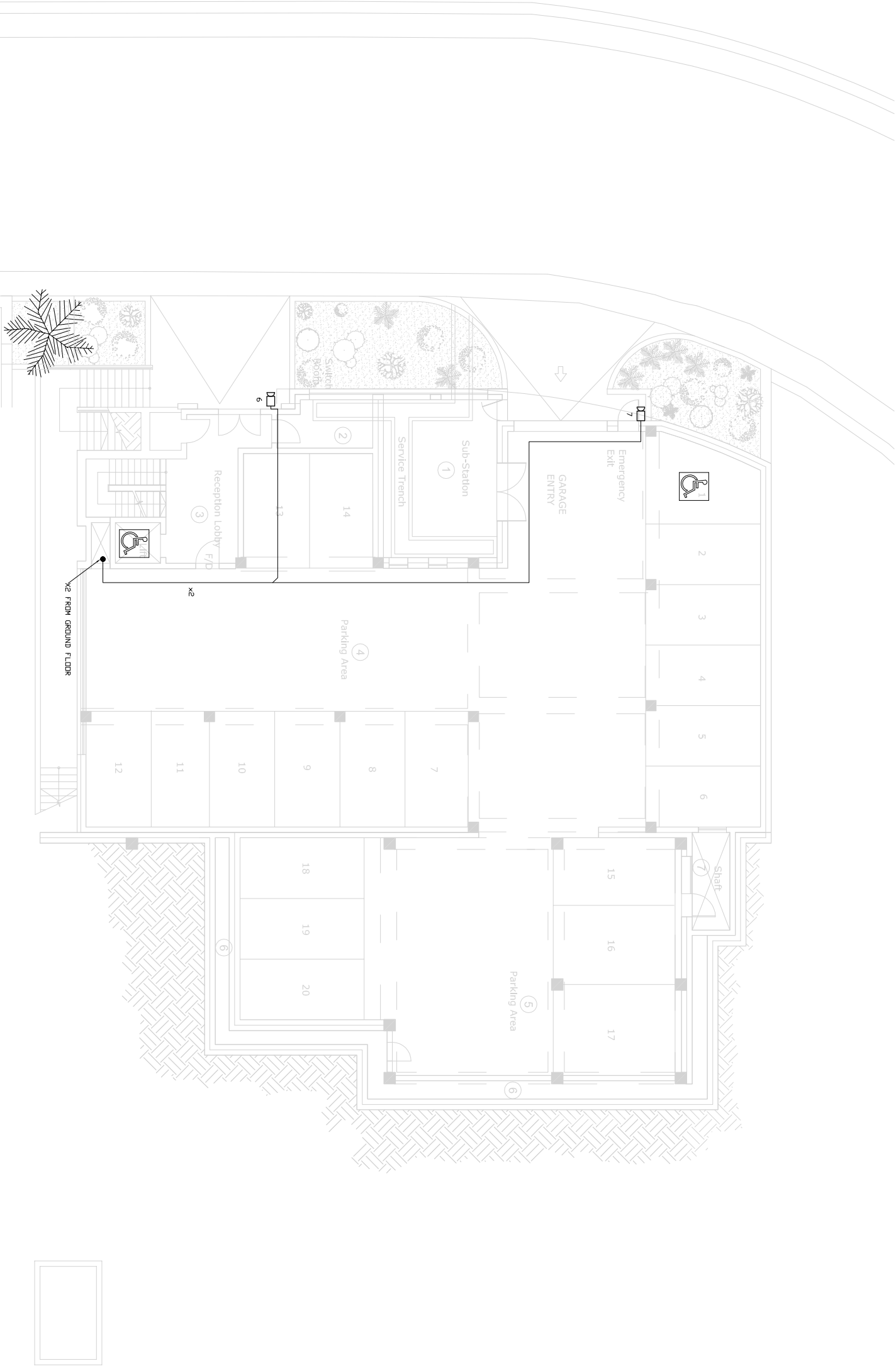


LEGEND

-  WEATHER-PROOF HOOD CAMERA – HD-PRO – P590HTL
-  16-CHANNEL DVR – HK VISION – DS-7316H1-S
-  19" LCD MONITOR – LJB – LCDHMI-1902
-  12VDC 10A POWER SUPPLY UNIT – POWER-PLEX – SWM1000
-  COAX + SUPPLY CABLE – NREBAIN – RG59 + RG6E
-  CABLE CHANGE IN LEVEL
-  230V SUPPLY THROUGH 3-PIN SOCKET OUTLET (PROVIDED BY OTHERS)
-  230V SUPPLY THROUGH FUSED OUTLET (PROVIDED BY OTHERS)



NOTES

- CONTROL EQUIPMENT INCLUDING CAMERAS SUPPLIES TO BE PLACED IN UNAUTHORIZED PERSONNEL, SUCH AS POSSIBLE UNREACHABLE FROM
- CABLE ROUTES TO FOLLOW UNOBSTRUCTIVE PATHS TO AVOID ANY
- TAKING INTO ACCOUNT REACH OR WITHIN UNSAFE AREAS SHALL BE
- MECHANICALLY PROTECTED
- ALL EXTERNAL CABLES TO BE MECHANICALLY PROTECTED
- CONTROL EQUIPMENT TO BE STERILIZED FROM LOW VOLTAGE, VIBRATION, AND OTHERS RESPECTIVE MULTIPLEXERS TO BE SUPPLIED FROM THE SAME PHASE.

Rev. no	Date	Modification	Drawn	Checked
A	16/05/13	AS FITTED	DA	JB



Alberta, Sun Graham Rd, Medical Bldg 3000, Maple  
Website: www.alberta.com  
TEL: (403) 244-0000  
FAX: (403) 244-0077

JOB TITLE:	STERLING SNI.F.F – HAL FAR		
JOB NO.:	15237		
DRAWING TITLE:	AS FITTED CCTV SYSTEM PLAN VIEW BASEMENT		
DETAILED DESIGN DRAWING ISSUED BY: CHALLETIN & CUSCHIERI			
INSULATION DRAWING			
DESIGNED BY:	ROBERT PARRUGIA		
DRAWN BY:	ANDREAS ONI		
CHECKED BY:	MATTHEW CASSAR		
SCALE:	1:100 (A1)		
DATE:	04 OCT 12		
DRAWING NO.:	S04/12/CC-009		
REV.:	A		